

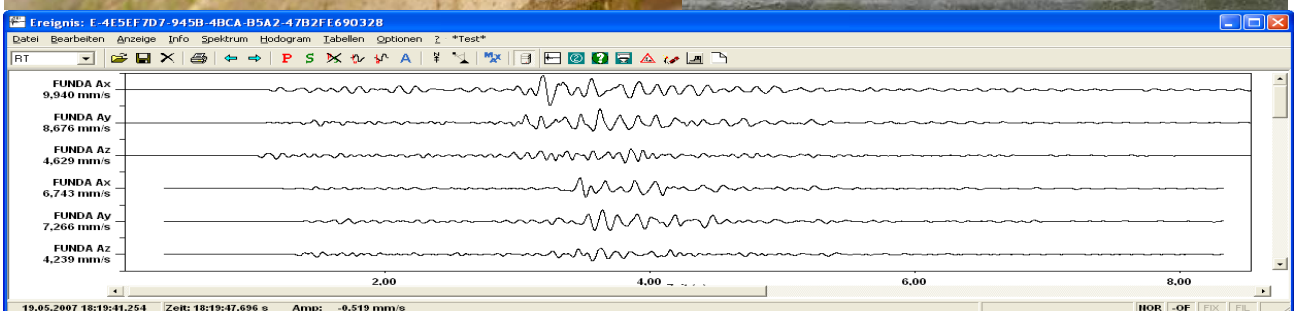
## SUMMIT M Hydra

### The Seismic 'Monitoring System'!

The SUMMIT M Hydra is the new multi-channel SUMMIT seismograph for seismological surveillance: The box with up to twenty-four monitoring channels has an extra wide frequency range and a very low noise level for ultra sensitive seismological applications. It provides continuous and event based recording.

### Specialised for Mobile Seismological Monitoring!

- Most flexible station deployment with Ethernet or wireless LAN telemetry
- Most accurate time base for continuous recording through GPS
- Extremely robust but lightweight casing
- Autonomous operation with up to 4 GB of internal memory for data storage
- Supreme service via rapid reaction support hotline



## Technical Specifications

Channels	4, 8, 12 channel instrument, up to 24 channels in customized housing
Sample Rate	125 Hz, 250 Hz, .. up to 16 kHz
Frequency Range	0.1 Hz up to Nyquist (8 kHz)
Recording Mode	Continuous or event based
Trigger Mode	Level, STA/LTA or both, Complex trigger logic can be defined
A/D Converter	24 bit delta sigma technology
Preamp Gain	Selectable 0, 20, 40 or 60 dB
Power Consumption	< 15 W for 12 channel instrument
Data Storage	2 x 4 GByte replaceable Compact Flash (hot pluggable)
Instantaneous Dynamic Range	≥ 120 dB @ 2 ms sampling interval
Equivalent Input Noise	Less than 0.3 μV RMS @ 2 ms sampling interval and 40 dB preamp gain
Crosstalk rejection	≥ 112 dB (between all channels)
Total Harmonic Distortion	< 0.0008 %
Common Mode Rejection	≥ 100 dB
Gain Accuracy	< 0.2 % between channels after calibration
Dimensions *	30 x 25 x 20 cm
Weight *	4.5 kg

\*) for 4 – 12 channel instrument

## Environmental Specifications

Operation Temperature	-30°C to + 70°C
Humidity Range	0 – 95 %
Case	Solid waterproof housing deployable in any surface environment

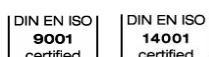
Subject to technical changes

**DMT GmbH & Co. KG**  
Exploration & Geosurvey

Am Technologiepark 1  
45307 Essen, Germany

Phone +49 201 172-1970  
Fax +49 201 172-1971  
info.summit@dmf.de  
www.summit-system.de

TÜV NORD GROUP



Instrumentation at a bridge base plate



Monitoring of footings