

SUMMIT X Stream

The 'Engineering Seismic System'!

The SUMMIT X Stream is the best value quality seismograph for engineering application. The robust 24 channel unit with the SUMMIT 'Plug & Trace' technology can be used in any environment for high speed production. The seismograph is designed as stand alone system operated by any standard Windows based Laptop or Tablet PC.

The SUMMIT X Stream is ideal for surveys with seismic streamers, VSP measurements, cross-hole tomography, MASW measurements or LVL surveys.

Specialised for Engineering surveys!

- Best value engineering seismograph
- Highest productivity
- For specialist applications such as LVL, MASW and engineering surveys
- Extremely robust, lightweight casing
- Supreme service via rapid reaction support hotline

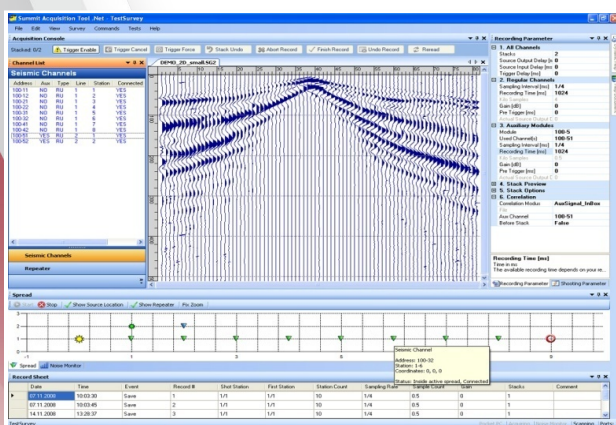
SUMMIT X Stream 24 channel unit



Land streamer



Data acquisition software



Technical Specifications

Sample Interval	1/48, 1/32, 1/16, 1/8, 1/4, 1/2, 1, 2, 4, 8 ms
Record Length	Up to 120,000 samples (single shot)
Preamp Gain	0 dB, 20 dB or 40 dB
A/D Converter	24 bit delta sigma technology
Maximum Input Signal	2.0 Volt RMS 5.6 Volt peak to peak
Input Impedance	20 kOhm
Instantaneous Dynamic Range	≥ 115 dB @ 2 ms sampling interval and 40 dB preamp gain
Equivalent Input Noise	Less than 0.2 μV RMS @ 2 ms sampling interval and 40 dB preamp gain
Crosstalk Rejection	≥ 112 dB (between channels)
Total Harmonic Distortion	≤ 0.0008 %
Common Mode Rejection	≥ 100 dB
Power Supply	+ 9 - 18 VDC @ 0.2 W / channel
Dimensions	30 x 24.9.0 x 19.6 cm
Weight	3.8 kg

Digital Anti-Alias Filter	- 3 dB @ 0.8 x Nyquist
Rejection at Nyquist Frequencies	-120 dB
Passband Ripple	+/- 0.05 dB
Built-In Test Functions	- Sine wave - Pulse - Instrument noise - Geophone step
System Check	- Battery status - Equivalent input noise - Total harmonic distortion - Instantaneous dynamic range - Common mode rejection - Cross talk - Time accuracy
Geophone Check	- Impedance - Damping - Natural frequency - Noise
Auxiliary Channels	Channels can be programmed as AUX or DATA

Subject to technical changes

Environmental Specifications

Operation Temperature	-20°C to + 60°C
Humidity Range	0 – 95 %
Case	Solid waterproof housing deployable in any surface environment

Overall System Performance and Flexibility

Typical Shot Cycling Time

- selected recording length +1 second

Mobile System Control

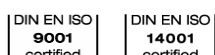
- via easy to handle standard PC / Laptop
- Operating System: Windows XP/Vista/7

Connectors

- 55 pin signal input connector
- 12 V DC Power-In (4-Pin)
- Trigger-In (BNC)
- USB 2.0

DMT GmbH & Co. KG

Am TÜV 1
45307 Essen, Germany
Tel +49 201 172-1441
Fax +49 201 172-1693
info.summit@dm-tgroup.com
www.summit-system.de



TÜV NORD GROUP

Disposal information:
Our products are subject to the WEEE directive. DMT has committed itself to take back all electrical and electronic components sold and to dispose of them professionally.
Please contact: products@dm-tgroup.com

WEEE Registration Number: DE 25917380

Earth. Insight. Values.