

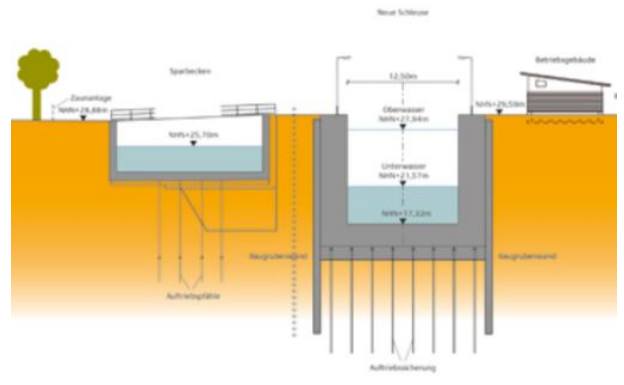
Monitoring of the Gleesen watergate during construction work

Customer: Waterway Construction Authority Datteln

Job definition: Installation of a geodetical and geophysical monitoring system and operation during reconstruction work of the old Gleesen watergate at Ems river

Services:

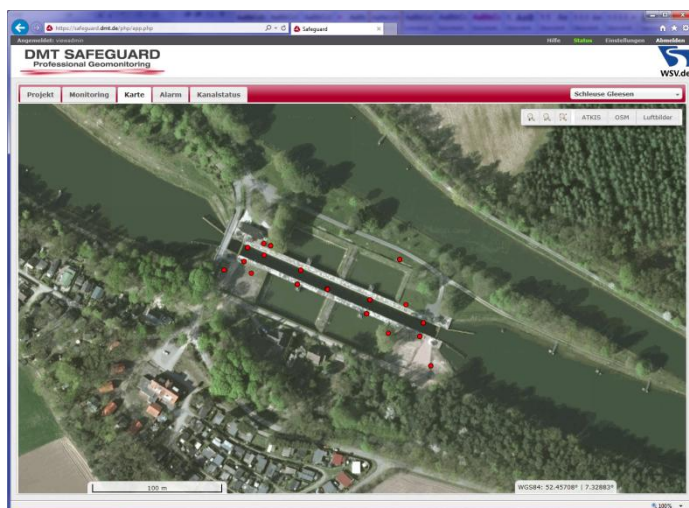
- Planning, installation and operation of an automated monitoring system to monitor the movement behavior of the watergate construction
- 1 x Monitoring total station with prisms
- 4 x Groundwater monitoring levels
- 1 x Water level for watergate basin
- 4 x Temperature sensors
- Automated data transfer, storage and web visualization with DMT SAFEGUARD
- Implementation of an early warning and alert system
- Detailed reporting for conservation of evidence



Cross-section of the new Gleesen watergate



Totalstation on bridge



DMT SAFEGUARD web portal for permanent access to measurement data



Preliminary planning of the new watergate

DMT GmbH & Co. KG
Geo Engineering & Exploration

Am Technologiepark 1
 45307 Essen

Telefon +49 201 172-1970
 Telefax +49 201 172-1971
 info@dmt-group.com
 www.dmt-group.com

