

GMES Terrafirma Project

ESA - European Space Agency

Customer:

ESA - European Space Agency

Job description:

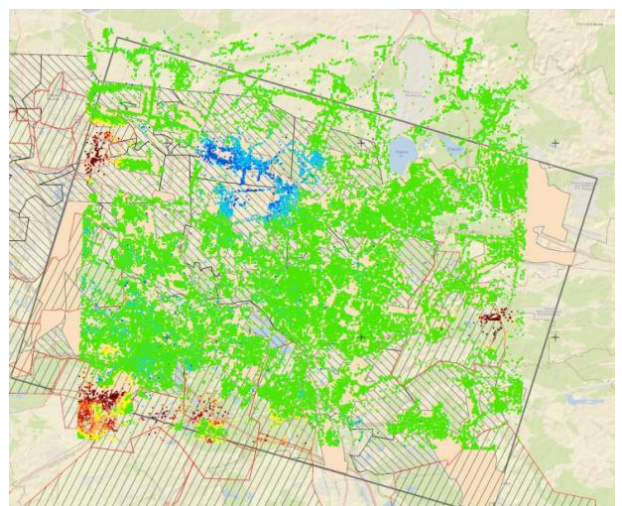
Terrafirma is a ESA project to provide extended InSAR services for ground movement monitoring to government agencies. By integrating additional information such as geological conditions and mining layout of the investigated areas detailed information about the cause of motion are derived and hazard mitigation measures can be optimized.

Services:

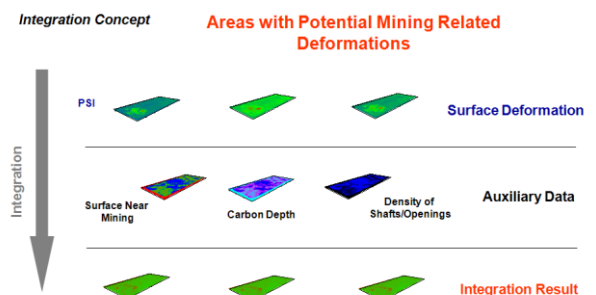
- Conducting two pilot studies in mining areas of Germany and Poland in cooperation with the Mining Authority of North-Rhine Westphalia and the Polish Geological Institute
- Extensive analysis of radar data, PSI - and InSAR evaluation results and GIS analysis (active or abandoned mines)
- Focus: detection and early warning concerning sinkholes in abandoned mining areas and measurement of uplift processes caused by flooding
- Intensive consultation of participating authorities and companies and dissemination by public workshops



Large area PSI measurement result



PSI measurement result indicating subsidence in active mining areas and heaving in abandoned mining areas



GIS based integration of movement measurements and auxiliary data

DMT GmbH & Co. KG
Geo Engineering & Exploration

Am Technologiepark 1
 45307 Essen

Telefon +49 201 172-1970
 Telefax +49 201 172-1971
 info@dmt-group.com
 www.dmt-group.com

TÜV NORD GROUP

