

DMT CoreScan®3

Digital Drill Core Imaging System for Oil and Gas Exploration

Portable core imaging device in combination with a set of analysis software developed for drill core image acquisition, storage and evaluation. Images of full circumference (360°) and core boxes of any dimension can be scanned and analysed.

Functions

- 360° images in highest resolution
- Applicable on any core drilling project
- Portable stand alone system
- Online global accessibility of core images
- Digital drill core library
- Structure analysis and presentation
- Derivation of geotechnical parameters (RQD)
- UV fluorescence imaging with DMT CoreScanUV

Services

- Selling and leasing of the CoreScan system
- Training on the CoreScan system
- Scanning of drill cores
- Re-orientation of the drill core log according to borehole inclination and deviation
- Structural and petrographical analysis of drill cores



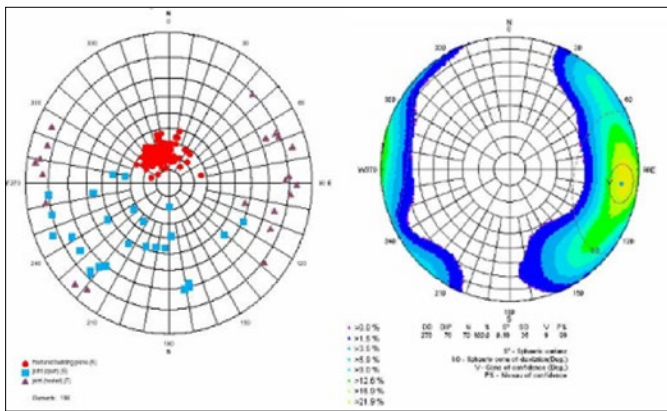
Heavily broken cores to scan and analyse



DMT CoreScan3

Tasks

- Scanning of drill cores up to 1,000 m per day
- Creation of a digital drill core library with quick search functions
- Re-orientation of the drill core log according to borehole inclination and deviation
- Structural analysis of drill cores
- Special routine for structural analysis of heavily broken drill cores
- Derivation of geotechnical parameters (RQD), fracture density, fracture distance



Pole and density diagram

Technical Specifications

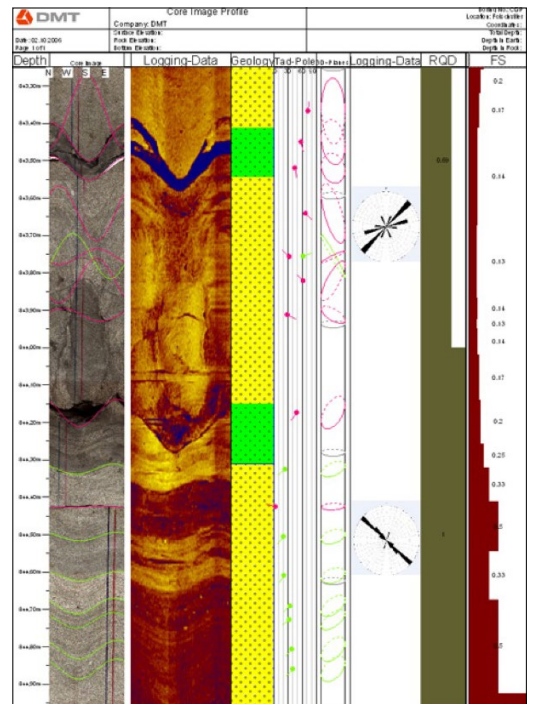
- Dimensions: Length: 1.36 m, Depth: 0.75 m, Height: 1.28 m, Weight: 128 kg
- Electric power supply: Voltage 110 VAC – 250 VAC, 50Hz/60Hz; power (pmax) 500 VA
- Core length: up to 1.05 m (full circumference and slabbed cores)
- Core diameter: 25 to 150 mm (unrolled), up to 250 mm (slabbed)
- Resolution: 5, 10 and 40 pixel/mm (127, 254 and 1016 dpi)

DMT GmbH & Co. KG

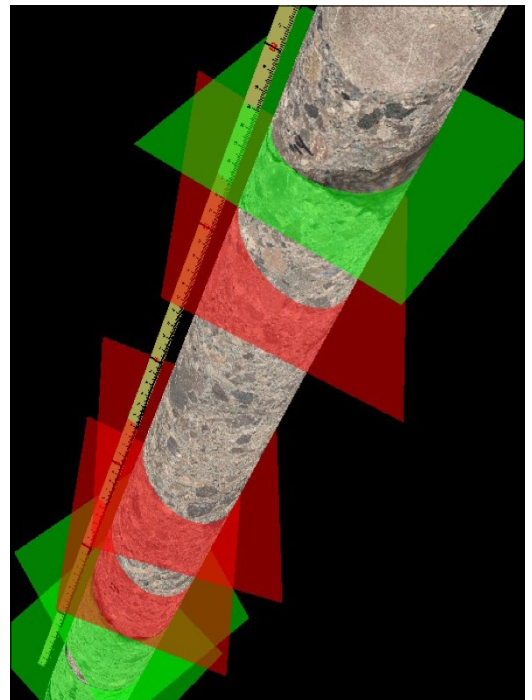
Am TÜV 1
45307 Essen, Germany
T +49 201 172-1441
F +49 201 172-1693
info.corescan@dm-group.com
corescan.de

Disposal information:
Our products are subject to the WEEE directive. DMT has committed itself to take back all electrical and electronic components sold and to dispose of them professionally. Please contact: products@dm-group.com

WEEE Registration Number: **DE 25917380**



Core Image with marked structures and composite log



3D core with structures