

# 3D-Reflection seismic survey for geological exploration in the Kirchstockach geothermal field

## Client:

Süddeutsche Geothermieprojekte GmbH & Co. KG  
Nußbaumstraße 10  
80336 Munich, Germany

## Task:

Geological structures such as faults and stratigraphic trends were to be explored down to depths of 4500 m in the Kirchstockach area by means of a 3D seismic survey. Main objective was to optimize the well path design.

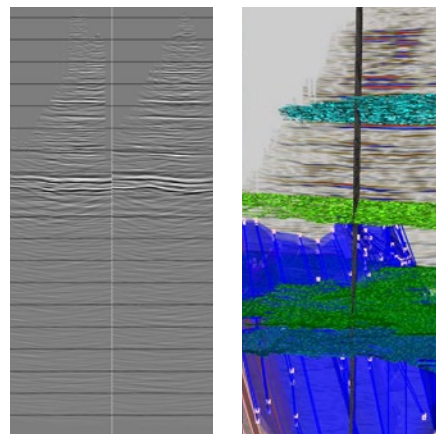
## Service:

DMT conducted the seismic survey fieldwork in July 2009. An area of approximately 30 km<sup>2</sup> was seismically surveyed. This vibro-seismic survey yielded a high-quality imaging of the subsurface.

Interpretation of the seismic data as well as advanced 3D geological modelling delivered a reliable comprehension of the reservoir's structural features down to 4500 m below ground level. Using the outcome of this work, client's well design for the target interval, originally based upon 2D seismic lines only, was revised completely.



Survey area



Seismic raw data and geological model



Data acquisition in the field

**DMT GmbH & Co. KG**  
Exploration & Geosurvey

Am TÜV 1  
45307 Essen, Germany

T +49 201 172-1970  
F +49 201 172-1971

exploration@dm-group.com  
dm-group.com



DIN EN ISO 9001  
DIN EN ISO 14001  
DIN ISO 45001